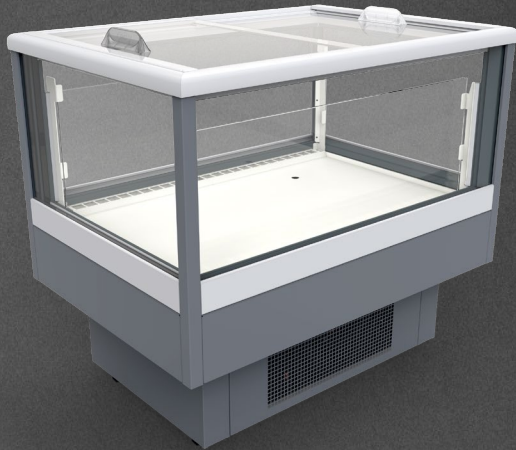




PLUG-IN → ISLANDS

# Pamir WNPA-10 1010 CSS



## Module:

1010



## Refrigerant:

R290



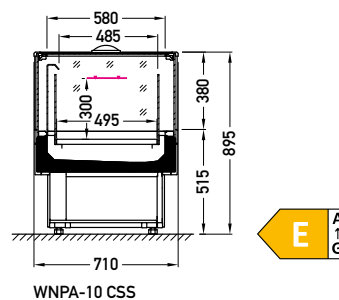
## Available options:

- working temperature: from -25°C to -21°C
- hot gas defrosting
- automatic evaporation of condensate
- electronic controller with temperature indicator
- **energy saving fans**
- exposition: zinc-plated steel, powder coated in white (RAL 9003)
- thermopane glass
- colour of the base black (RAL 9005)
- bumper (optionally)
- sidewalls integrated
- LEDit lighting (optionally)

Pamir WNPA-10 1010 CSS



## Cross sections:



WNPA-10 CSS

**CSS** – cover | single, straight | sliding (sideways)

Available modules: 1010