



PLUG-IN → PROMOTION

Fiji LDFI-25 1250

CSS | BSA



Module:

1250



Refrigerant:

R290



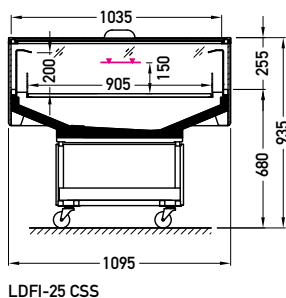
Available options:

- working temperature: for BSA and CSS with integrated sidewalls version from 0°C to 2°C; for BSA version with single glass sidewalls from 2°C to 4°C
- hot gas defrosting
- automatic evaporation of condensate
- electronic controller with temperature indicator
- **energy saving fans**
- exposition: zinc-plated steel, powder coated in white (RAL 9003)
- inox bumper \varnothing 25 mm
- colour of the base black (RAL 9005)
- integrated glass with black/grey screen printing; single glass without printing
- on wheels

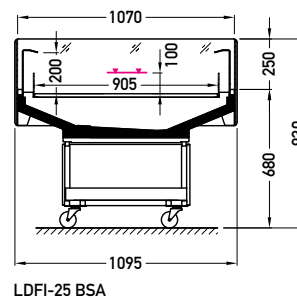
Fiji LDFI-25 1250 CSS



Cross sections:



LDFI-25 CSS



LDFI-25 BSA

CSS – cover | single, straight | sliding (sideways)

BSA – low glass or front glass riser | single, straight | fixed

Available modules: 1250